

BRUMARK Sensor Floor

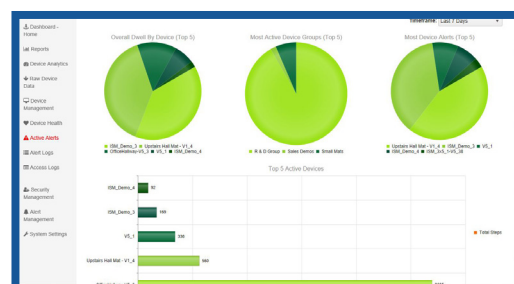
Powered by **Sencorables**

Take traffic measurement and analysis to the next level!

This innovative flooring solution provides a simple way to collect and analyze valuable real-time data on the presence, exact location, movement, direction and dwell time of people within an environment.

And Brumark Sensor Floor installs under almost any type of Brumark flooring, so you can get the look you want and the data you need to enhance visitors' experience and engagement.

- Made of a double layer of polypropylene with incorporated force sensors
- Can be installed underneath almost any Brumark flooring, including carpet, carpet tiles, FlexFloor, raised flooring, and luxury vinyl tiles
- Easy installation, with no special tools required; simple to transport, dismantle and store
- Made in the USA
- Fire-retardant; resistant to water, moisture, mold, fungus and mildew; non-allergenic; and odor and VOC-free



Brumark Sensor Floor Dashboard



Brumark Sensor Floor

Contact us for more information and a quote!